

Development and setting up TMWAthena (server) on windows.

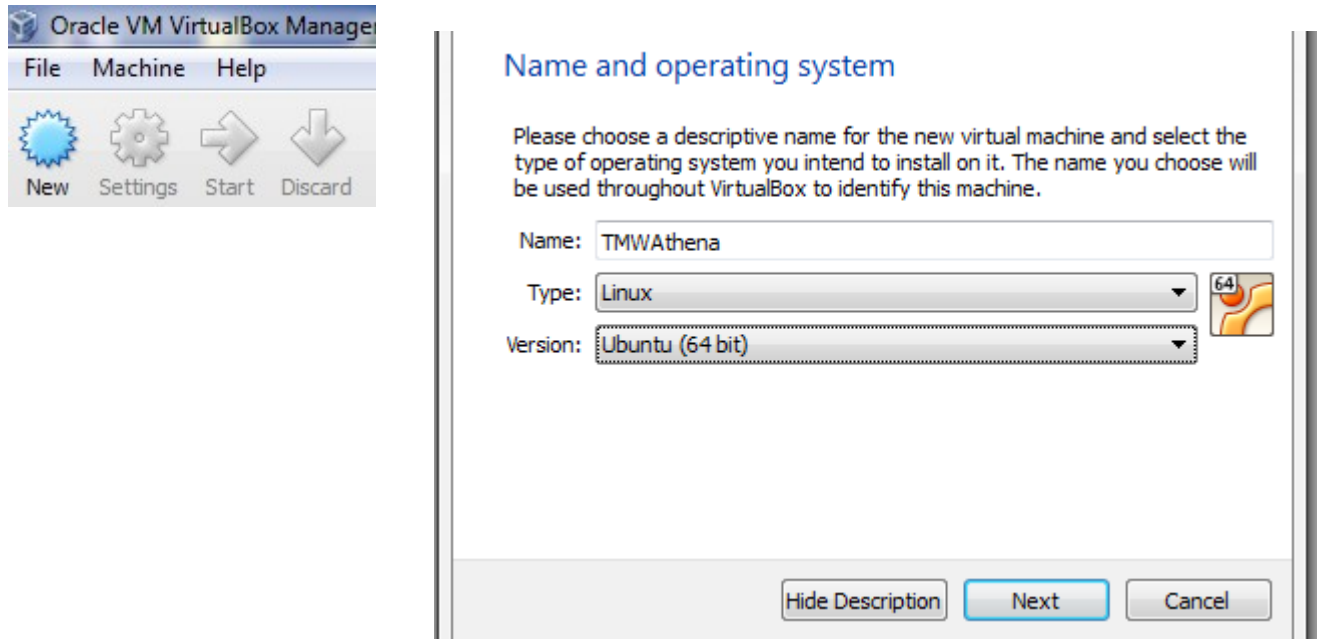
Software you will need: [Oracle VM VirtualBox](#), and [Ubuntu server](#).

Note: You will need more software but we are just going to worry about these ones for now.

Download and Install the VM software and reboot your computer. The version used in this tutorial is VirtualBox-4.3.10-93012-Win. 102MB

Now download Ubuntu server edition (no installation necessary at this point)The version used in this tutorial is ubuntu-14.04.1-server-amd64.iso 572MB

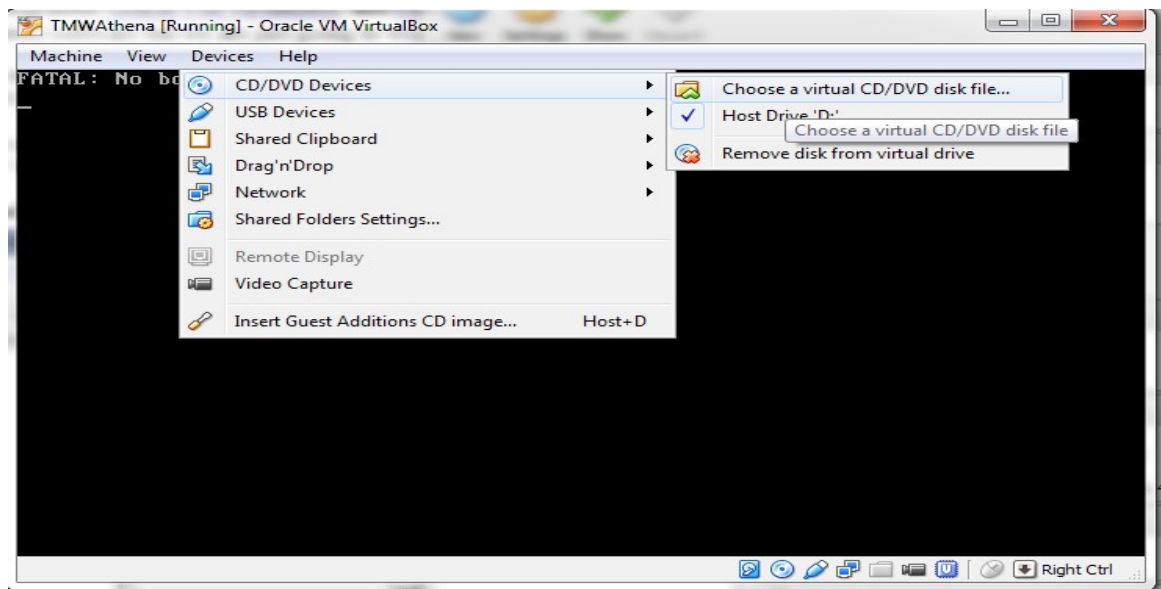
Press “New” on Virtual box and fill in the blanks.



You can continue pressing next until you complete but I suggest using 512mb of ram and at least 4gb of HDD space. Default settings are fine for the rest and you can continue to press next until you have finished.

The green arrow that says “Start” below it should now become available. Click it and press “Ok” to use the default drive. On the top of the new screen you will see “devices” Select that and on the drop down menu select “CD/DVD Devices” and choose a virtual CD/DVD disk file and navigate to where you downloaded your ubuntu iso file and press open on it.

After you have selected the ISO file go to “Machine” at the top and select “reset”. You should now have a screen that prompts you for your language preference. Continue installing Ubuntu on your virtual machine. Do Not Forget your username or password.



Once you are at a black screen with some text you should be able to type your username in and press enter. Then type in your password and press enter. Congrats you have now setup a linux environment and are logged into it. You can now follow these instructions [How to Develop](#)

```
TMWAthena [Running] - Oracle VM VirtualBox
Machine View Devices Help
FATAL: No bo

Ubuntu 14.04.1 LTS ubuntu tty1
Hint: Num Lock on
ubuntu login: meway
Password:
Welcome to Ubuntu 14.04.1 LTS (GNU/Linux 3.13.0-32-generic x86_64)

* Documentation:  https://help.ubuntu.com/

System information as of Fri Aug  1 13:34:36 CDT 2014

System load: 0.72           Memory usage: 11%    Processes:      78
Usage of /:  29.8% of 3.11GB Swap usage:   0%     Users logged in: 0

Graph this data and manage this system at:
https://landscape.canonical.com/

0 packages can be updated.
0 updates are security updates.

The programs included with the Ubuntu system are free software;
the exact distribution terms for each program are described in the
individual files in /usr/share/doc/*/copyright.

Ubuntu comes with ABSOLUTELY NO WARRANTY, to the extent permitted by
applicable law.

meway@ubuntu:~$
```

If you have any questions you can ask on the forum [here](#).